

Graduate Program in Electrical and Computer Engineering

January 20, 2021



LEHIGH UNIVERSITY | Electrical and
Computer Engineering

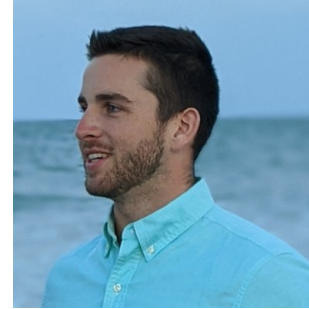
Please note

- We are recording this webinar.
- If you prefer not to be recorded, please turn off your camera.
- Please feel free to ask questions in the chat.
- We will have open questions at the end too.

Today's Students/Alumni Panel



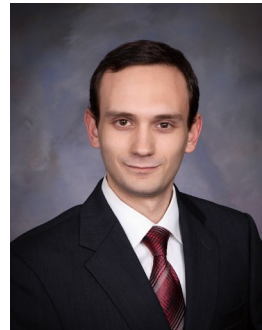
Andrew Charway
2nd Year PhD Student



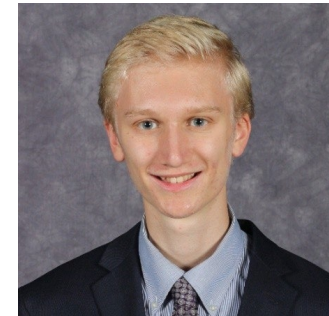
Dan Fay
1st Year MS Student



Sudeep Khanal (PhD'16)
Sr. Process Engineer at SLD Laser



Nicholas LaRosa
1st Year MS Student



Roland Nowak
1st Year MS Student

About Lehigh University



- Located in Pennsylvania's beautiful Lehigh Valley, ~1,600 acres Campus;
- Ranked 49 in US News College Ranking. 4,900 Undergraduates, 2100 Graduate students;
- Five colleges: Art & Science, Business, Education, Engineering, College of Health



Rossin College of Engineering



2019 NSF Career Award Winners

A Snap Shot

- 140 tenure track faculty in 8 academic departments
- 2,200 undergraduates, 850 graduate students
- The Rossin College generates >50% of Lehigh's Ph.D. graduates, journal publications, and research expenditures.
- 30% of current engineering faculty members are NSF CAREER Award recipients
- 31% of Lehigh engineering students are female (versus the 18% national average)



Department of ECE

- **Lehigh's Electrical Engineering program is one of the first in the U.S., dates back to 1890's**
- **21 T&T faculty members: 8 IEEE/CAE Fellows, 7 NSF Career winners, 1 YIP + 1 PECASE + 3 DLs**
- **5 focus areas: Photonics & Circuits, SP & Comm, Electrical Power, CompE, Bioelectronics.**
- **~270 undergraduate students**
- **~85 Graduate students**
- **Excellent facilities and equipment**

ECE Dept resides in Packard Laboratory built in 1929



Graduate degrees in ECE

- **PhD** in EE or CompE
 - Total of 48 credit hours after a MS
 - Total of 72 credit hours after a BS
- **MS** in EE, CompE, Photonics, or Machine Learning
 - Coursework (30 Credit hours)
 - Thesis or independent study optional
- **MEng** in EE or CompE
 - Coursework (30 Credit hours)
 - Independent study optional



Graduate Admissions

- Deadline for consideration of financial support: **Jan. 15.**
- Final deadline for fall admission: **Jul. 15.**
- GRE is not required for 2021 admission
- **App fee waivers available; email: rls304@lehigh.edu**

For international students:

Minimum TOEFL

- Reading: 20
- Listening: 15
- Speaking: 20
- Writing: 20
- COMPOSITE: 79

Minimum IELTS

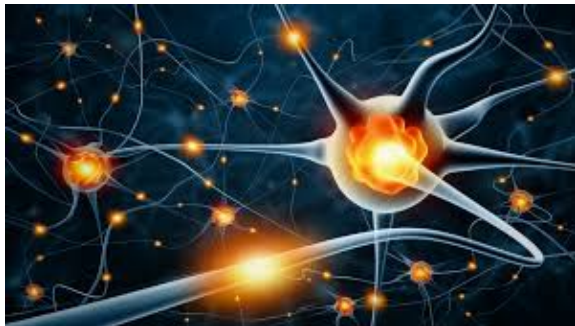
- Reading: 6.5
- Listening: 6.0
- Speaking: 6.5
- Writing: 6.0
- OVERALL: 6.5

PhD Student support

- **First-year support**
 - Presidential Fellowships
 - University Fellowships
 - Rossin Teaching Fellowships
- **Subsequent support**
 - Research Assistantships
 - Teaching Assistantships
 - Department Fellowships



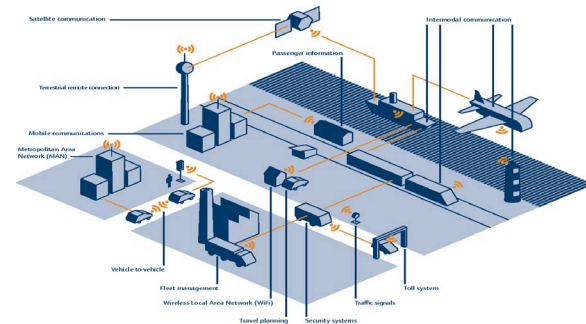
Research activities



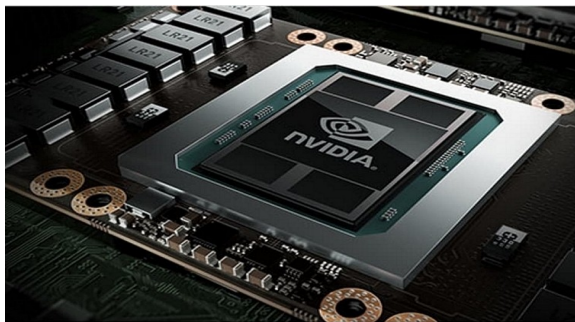
Bioelectronics



Machine Learning and AI



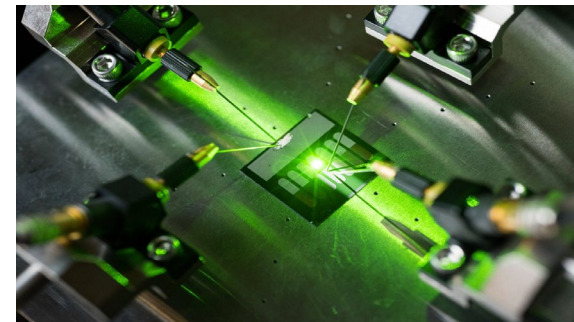
Cyber Physical Systems
and Communications



Computer Engineering



Electric Power and Energy



Semiconductors and Photonics

Faculty Profiles

Bioelectronics/Biophotonics



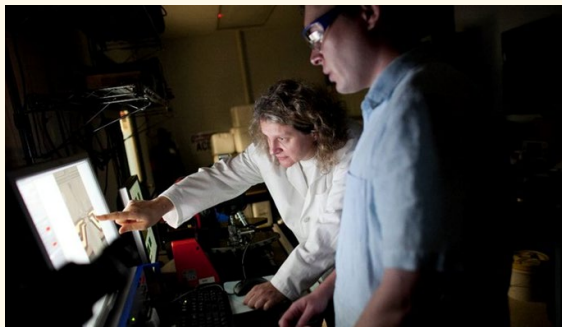
**Prof.
Berdichevsky**



**Prof.
Tatic-Lucic**



**Prof. Zhang
(courtesy appointment)**



Electric Power & Energy



Prof. Kishore



Prof. Norian



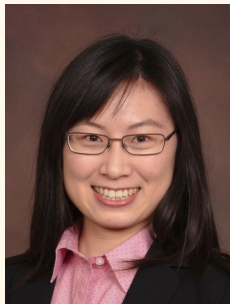
Prof. Liu



Computer Engineering



Prof. Cutitaru



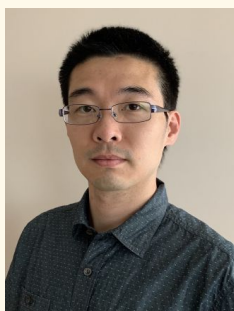
Prof. Guo



Prof. Yan



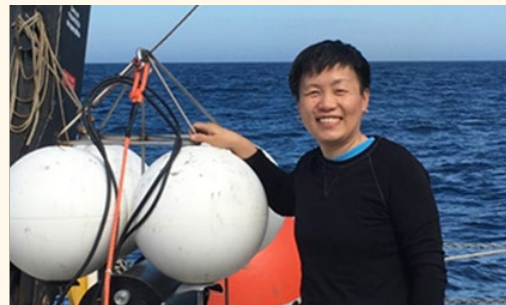
Prof. Wen



Prof. Yin



Prof. Zheng



Rosa Zheng@Ocean Experiment

Machine Learning & Communications



Prof. Blum



Prof. Li



Prof.
Venkitasubramaniam



Prof. Xiao (ECE
Chair)



Electronics & Photonics



Prof. Frey



Prof. Hatalis

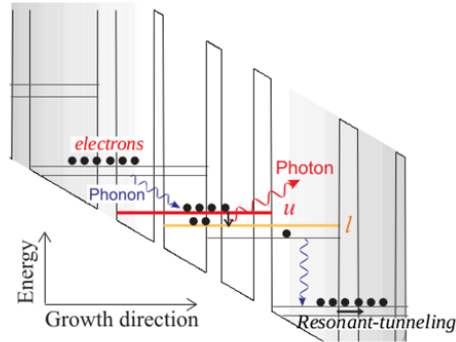


Prof. Kumar



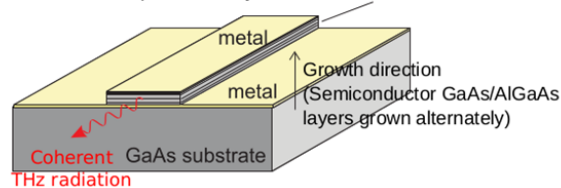
Prof. Wierer

Superlattice gain medium due to intersubband transitions

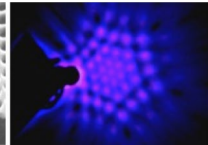
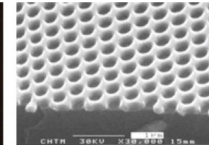
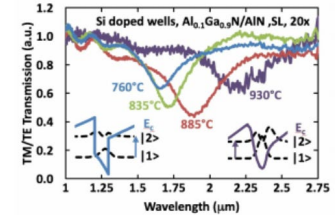
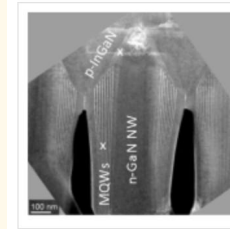


Terahertz electromagnetic cavity using metallic confinement

GaAs/AlGaAs superlattice layers for terahertz emission



Website: jwierer.com



III-nitride materials, devices, and physics



LEHIGH UNIVERSITY

Department of Electrical and Computer Engineering

Where do our students go?



KEYSIGHT
TECHNOLOGIES



LOCKHEED MARTIN



THALES

OTIS



AVAGO
TECHNOLOGIES



Argonne
NATIONAL LABORATORY



NREL
NATIONAL RENEWABLE ENERGY LABORATORY



LEHIGH UNIVERSITY

Department of Electrical and Computer Engineering

Questions?



University Career Services

Average BS Starting Salary

Discipline	Class of 2019	Rank	Class of 2018	Rank
Bioengineering	\$59,220	10	\$58,364	9
Chemical Engineering	\$66,892	6	\$70,638	3
Civil Engineering	\$64,351	8	\$64,932	7
Computer Engineering	\$72,154	3	\$71,355	2
Computer Science	\$84,162	1	\$87,077	1
Electrical Engineering	\$77,000	2	\$68,049	4
Environmental Engineering	\$64,500	7	\$62,750	8
Industrial & Systems Engineering	\$70,091	4	\$66,080	6
Mechanical Engineering	\$68,309	5	\$67,700	5
Materials Science & Engineering	\$65,929	9	\$56,500	10

<https://www1.lehigh.edu/admissions/job-placement-success-postgrad-education>

Graduate Program in Electrical and Computer Engineering

January 20, 2021



LEHIGH UNIVERSITY | Electrical and
Computer Engineering