



LEHIGH
UNIVERSITY

DEPARTMENT OF
BIOENGINEERING

LEHIGH - Where Engineering Meets Human Health

Department at a glance:

***16** CORE FACULTY MEMBERS*

***16** ASSOCIATED FACULTY MEMEBERS*

***3** RESEARCH FOCUS AREAS*

❖ BIOCOMPUTATIONS & MODELING

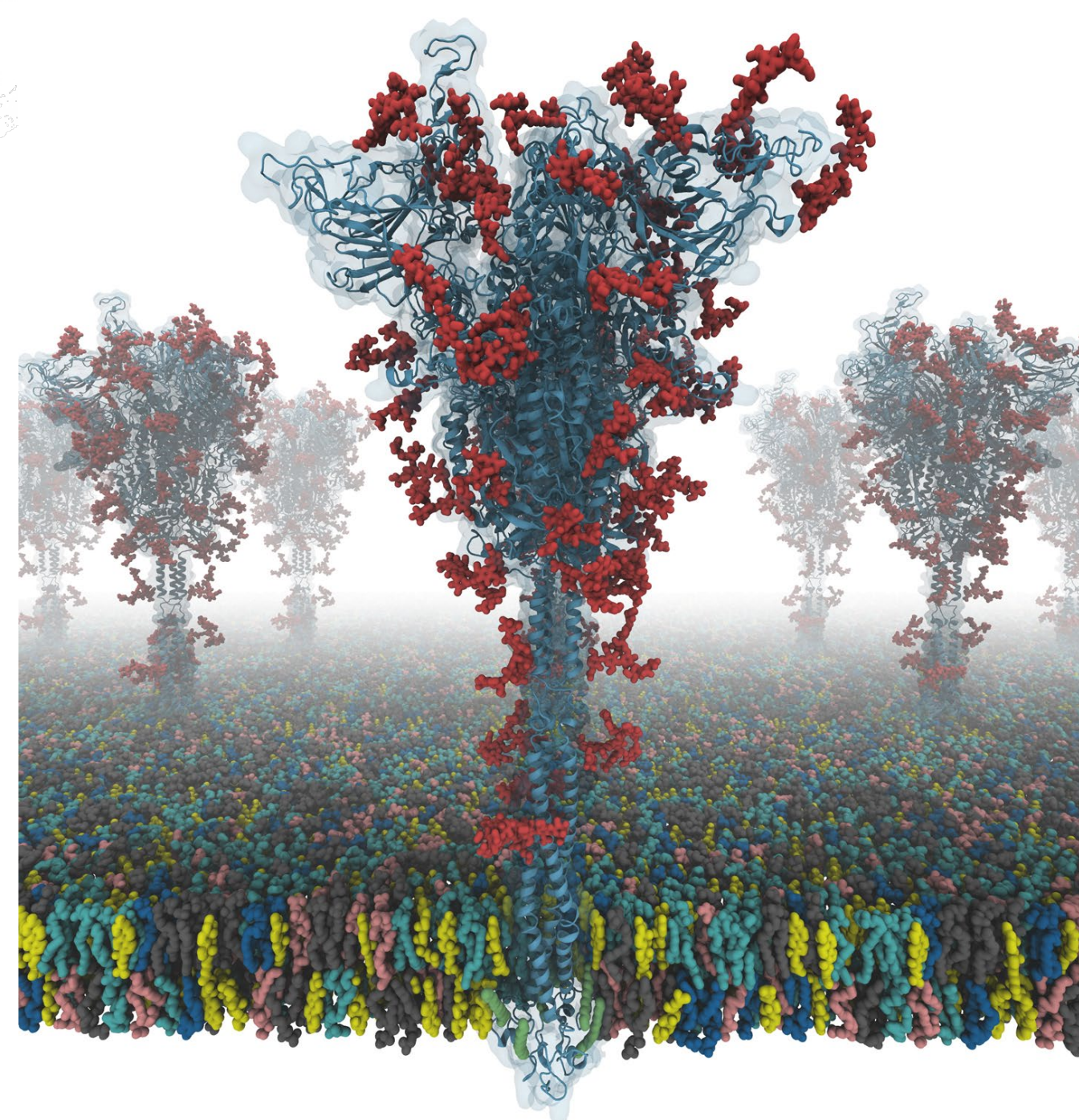
*❖ DIAGNOSTICS, SENSORS &
DEVICES*

❖ MATERIALS & THERAPIES

***30** GRADUATE STUDENTS*

***195** UNDERGRADUATE MAJORS IN 3
UNDERGRADUATE TRACKS*





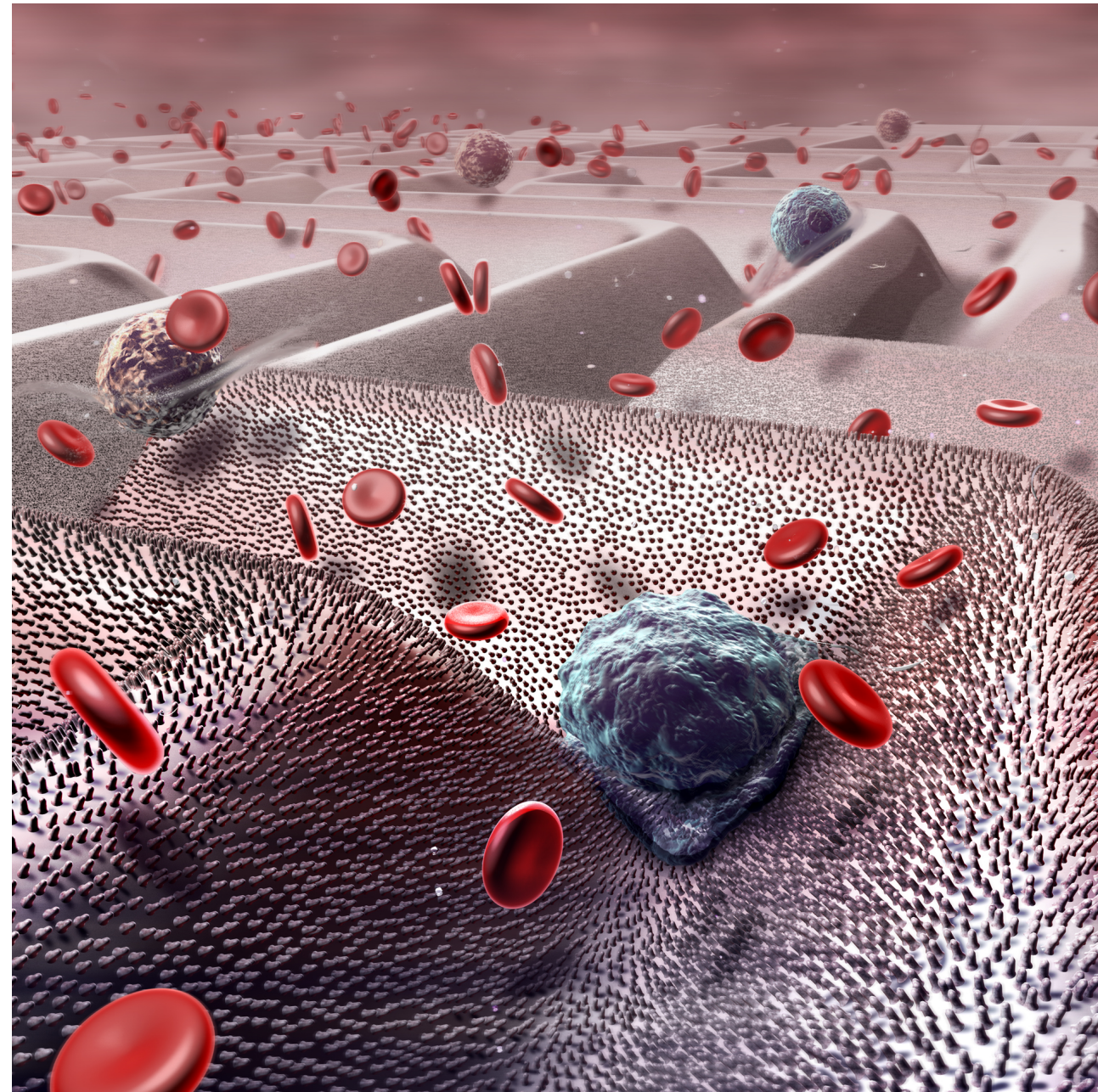
***Biocomputations
and Modeling –***

***Revolutionizing
Bioengineering***



Developing New Leaders

Diagnostics, Sensing and Devices – Enabling Healthcare



“Catch & Release” of circulating tumor cells using a novel microfluidic device. Courtesy of Dr. Yaling Liu



Engaging Creative Problem Solvers

Single molecule force microscopy analysis of Von Willebrand Factor folding dynamics guides therapeutic innovations. Work by Dr. Xiaohui (Frank) Zhang, Dr. Xuanhong Cheng and colleagues

***Materials and Therapies –
Innovating Solutions***



Seeking Intellectually-Motivated and Diverse Individuals Eager to Thrive on Engaged Research & Meaningful Collaboration



Choose Bioengineering – And Be Empowered to Impact the World!

LEHIGH

We're centrally located, with easy access to the major Northeast Biotechnology and Pharmaceutical Corridors



Learn more at: engineering.lehigh.edu/bioe

*Join our Interactive Chat to talk to us
about recruiting and research
opportunities!*





LEHIGH
U N I V E R S I T Y

**DEPARTMENT OF
BIOENGINEERING**

Questions? Contact inbioe@lehigh.edu